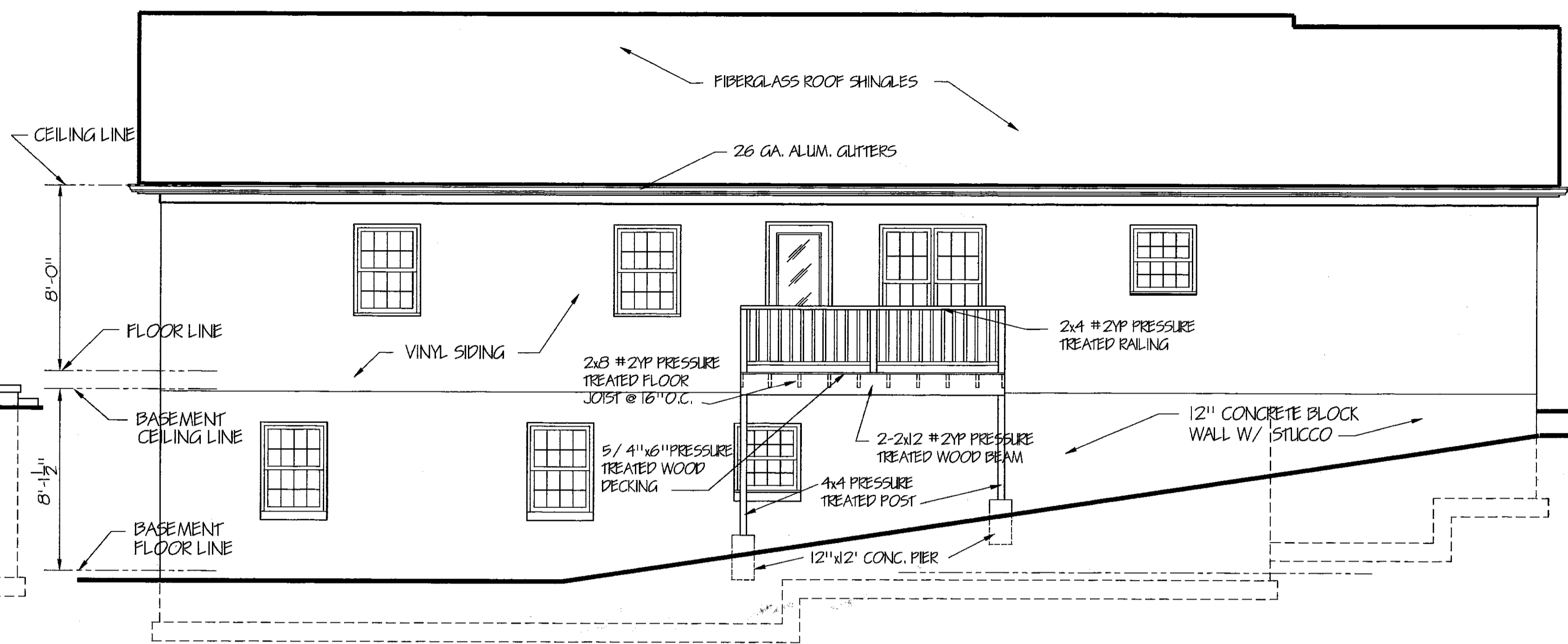


LEFT SIDE ELEVATION  
SCALE: 1/4" = 1'-0"

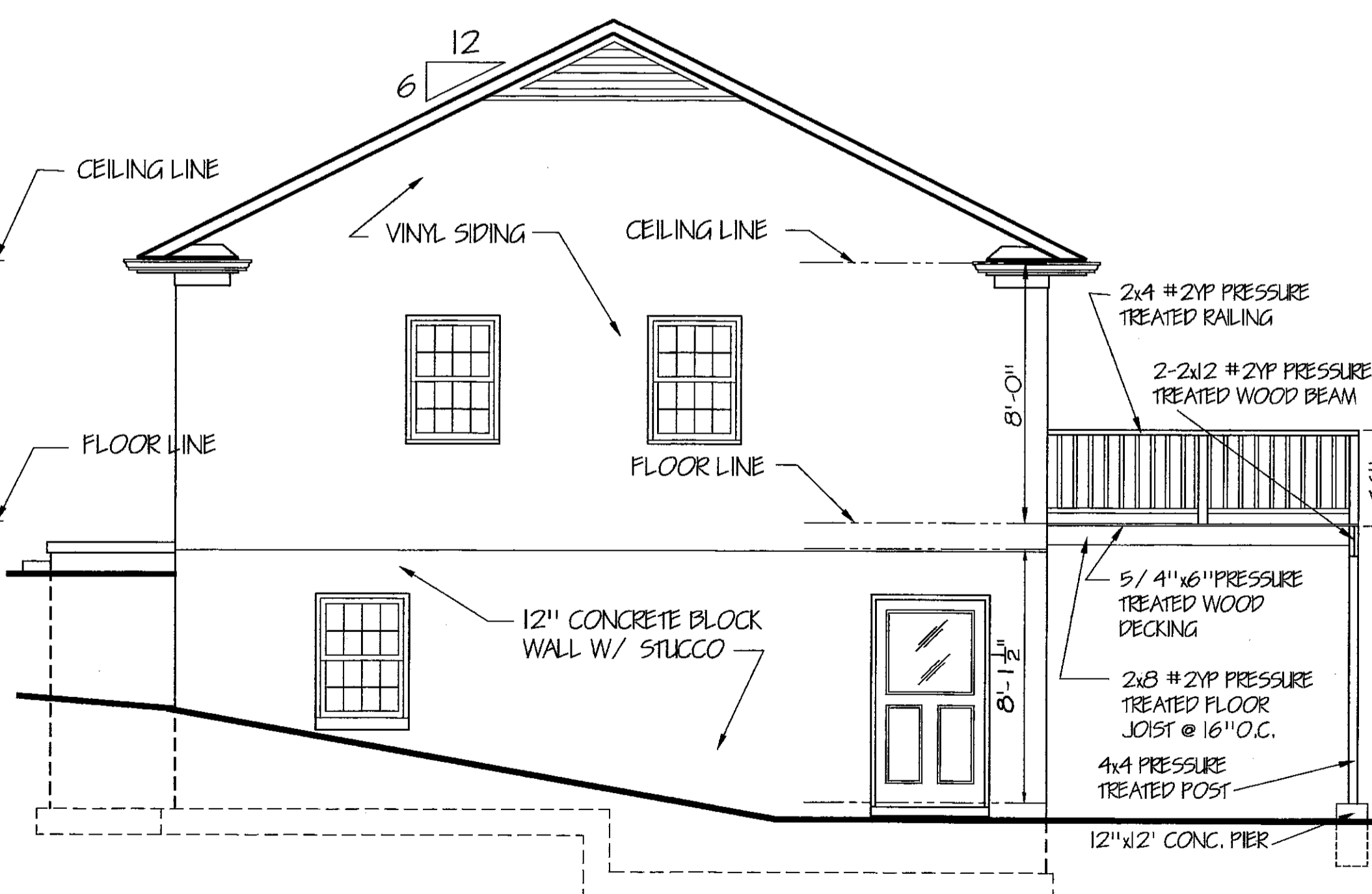


REAR ELEVATION  
SCALE: 1/4" = 1'-0"

NOTE:  
ALL PRESSURE TREATED LUMBER TO HAVE A NET RETENTION OF 0.4 LBS. PER CUBIC FOOT WITH CHROMATED COPPER ARSENATE, TYPE C OXIDE FORMULATION



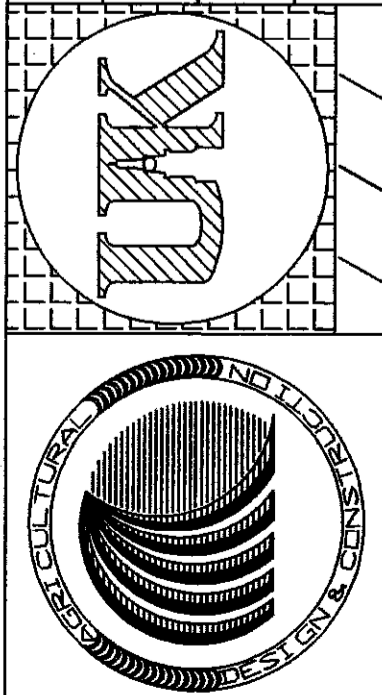
FRONT ELEVATION  
SCALE: 1/4" = 1'-0"

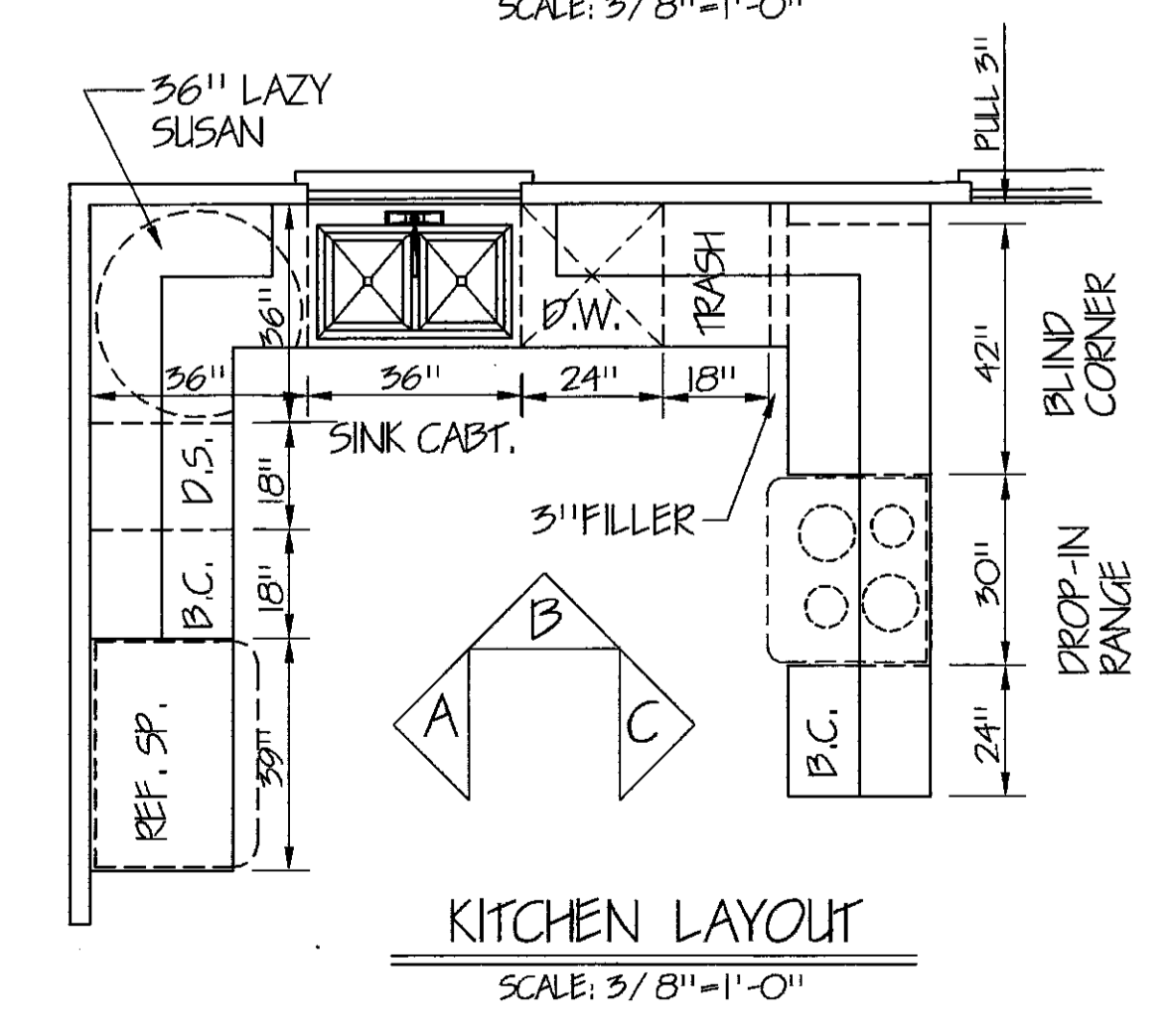
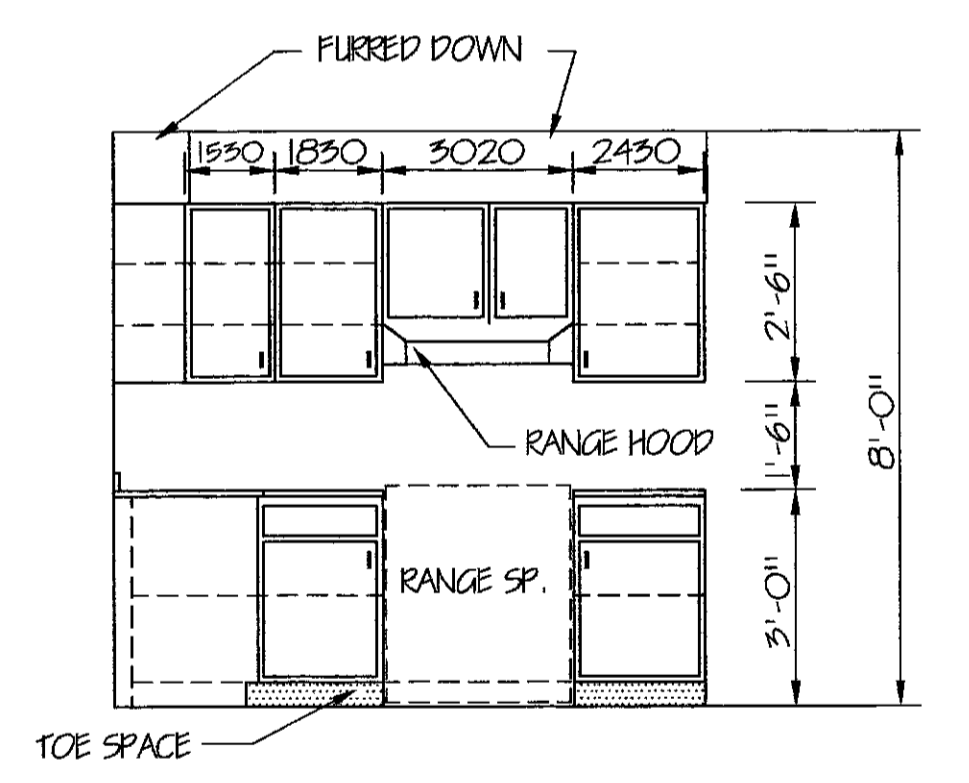
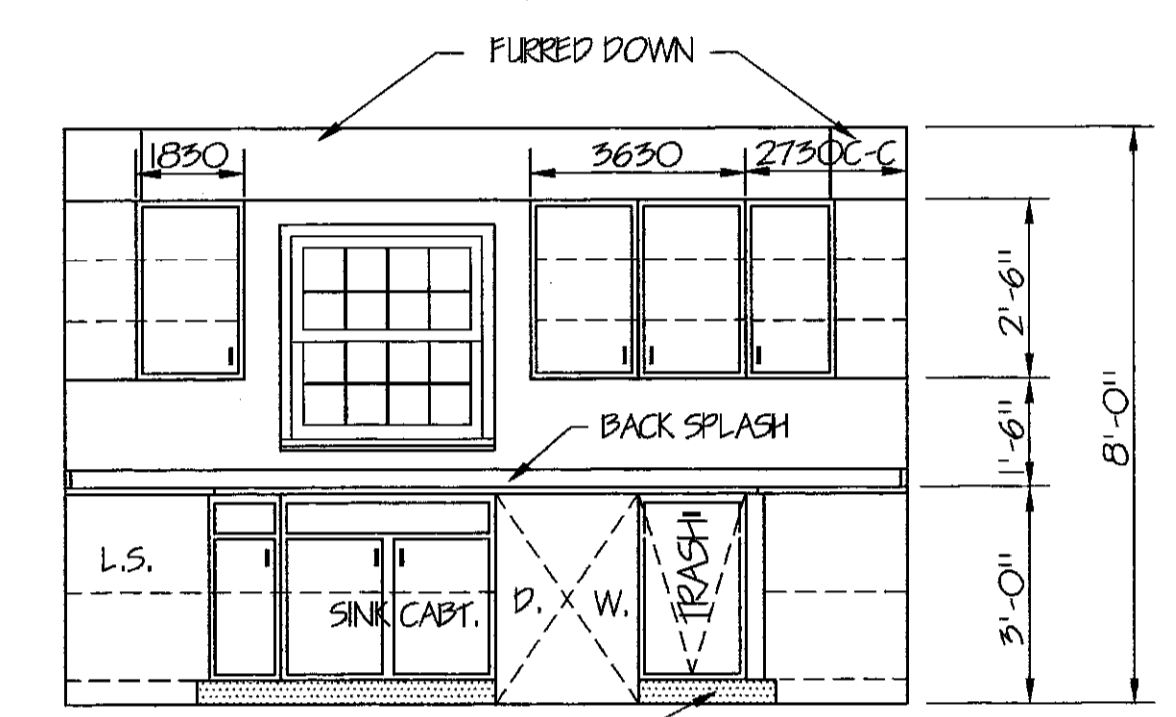
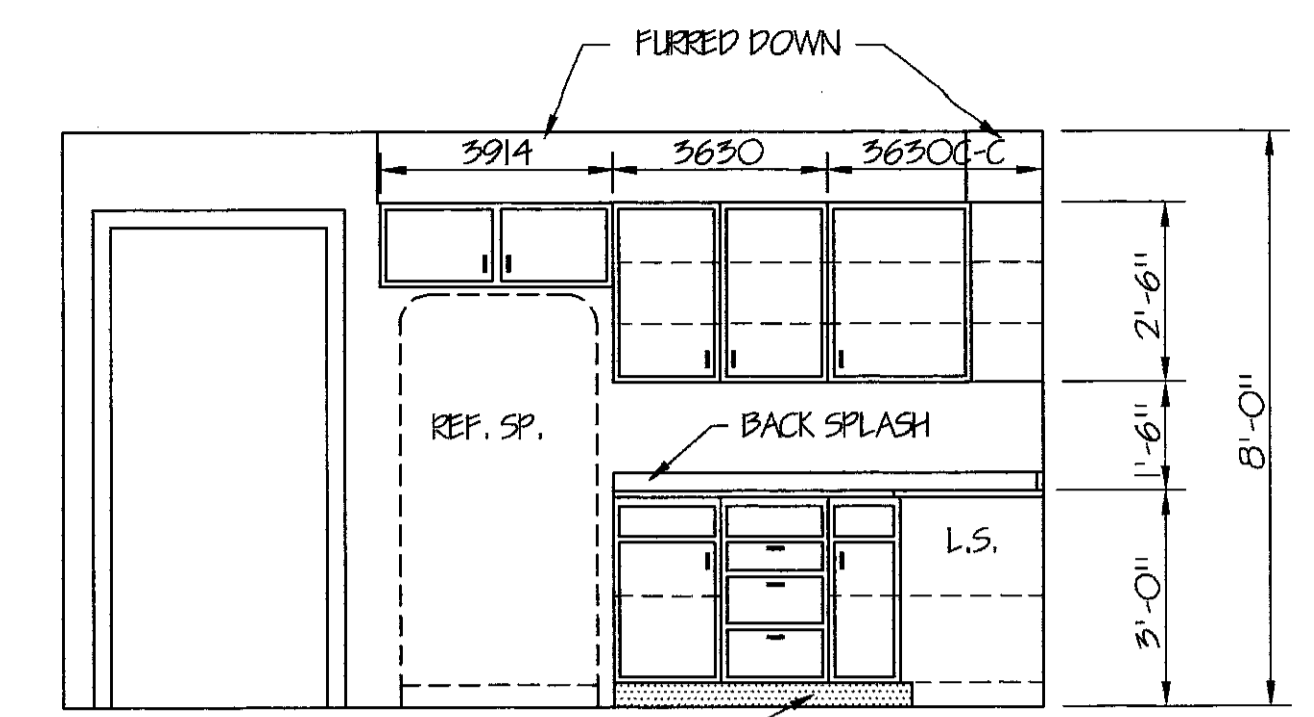
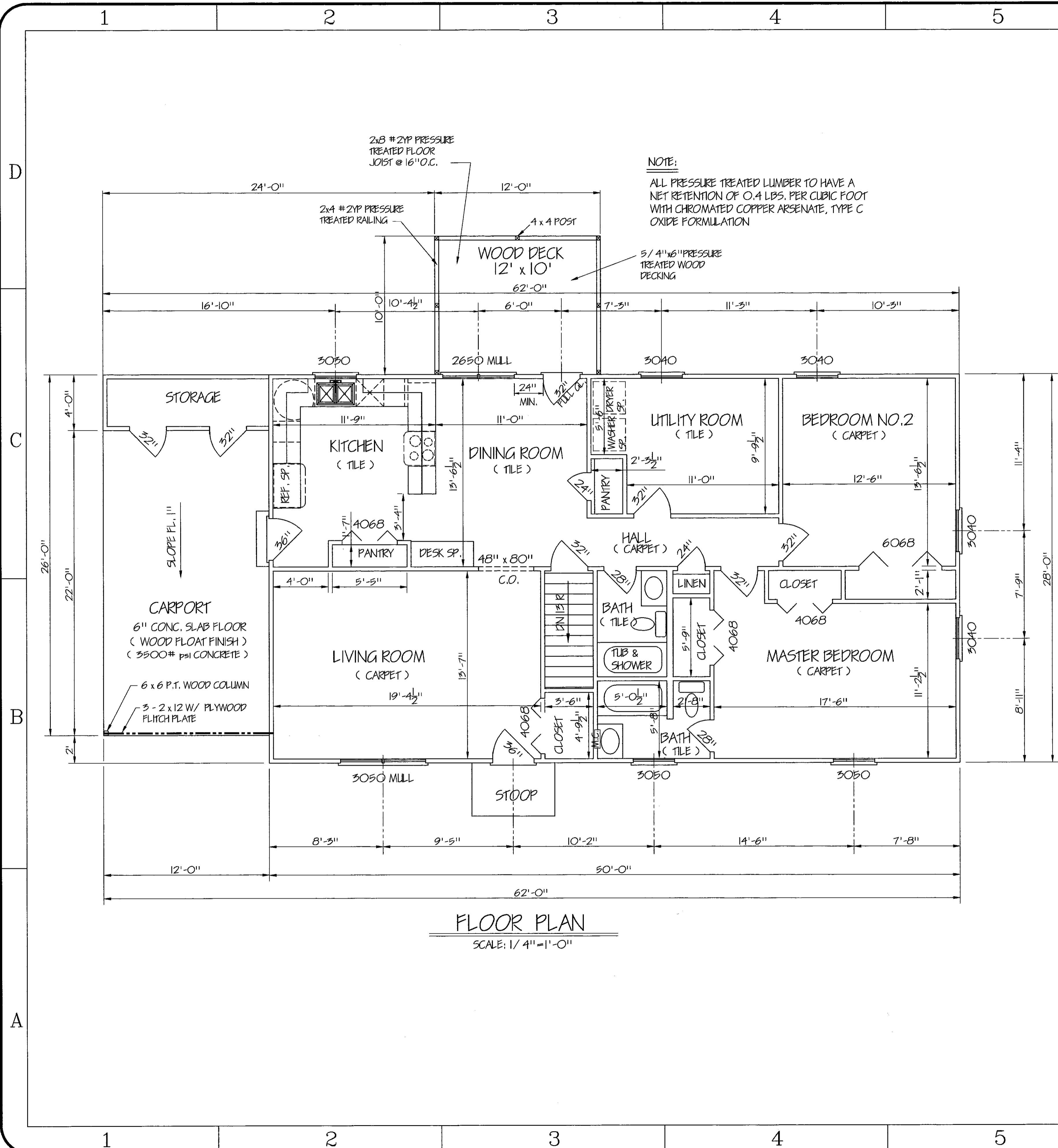


RIGHT SIDE ELEVATION  
SCALE: 1/4" = 1'-0"

UNIVERSITY OF KENTUCKY COLLEGE OF AGRICULTURE

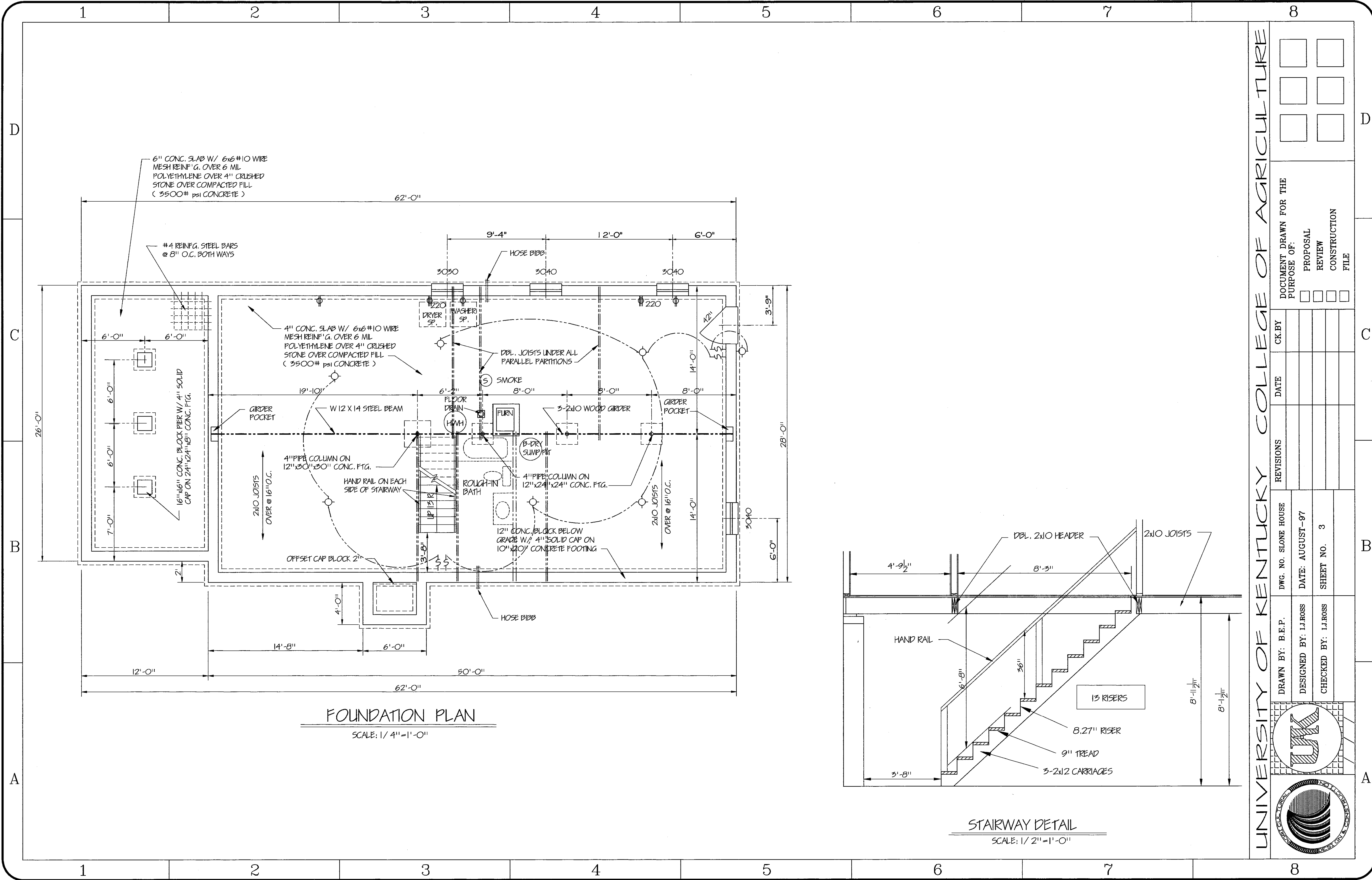
DRAWN BY: B.E.P.	DWG. NO. STONE HOUSE	DATE: AUGUST-97	SHEET NO. 1	REVISIONS	DATE	CK BY	DOCUMENT DRAWN FOR THE PURPOSE OF:				
	DESIGNED BY: I.J. ROSS						PROPOSAL	REVIEW	CONSTRUCTION	FILE	
CHECKED BY: I.J. ROSS							<input type="checkbox"/>	<input type="checkbox"/>	<input type="checkbox"/>	<input type="checkbox"/>	<input type="checkbox"/>





UNIVERSITY OF KENTUCKY COLLEGE OF AGRICULTURE

DRAWN BY: B.E.P.	DWG. NO. SLOANE HOUSE	REVISIONS	DATE	CK BY	DOCUMENT DRAWN FOR THE PURPOSE OF:
DESIGNED BY: I.J. ROSS	DATE: AUGUST-97				PROPOSAL
CHECKED BY: I.J. ROSS	SHEET NO. 2				REVIEW
					CONSTRUCTION
					FILE

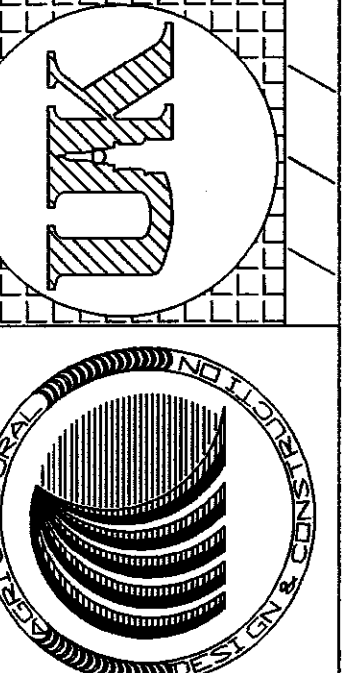


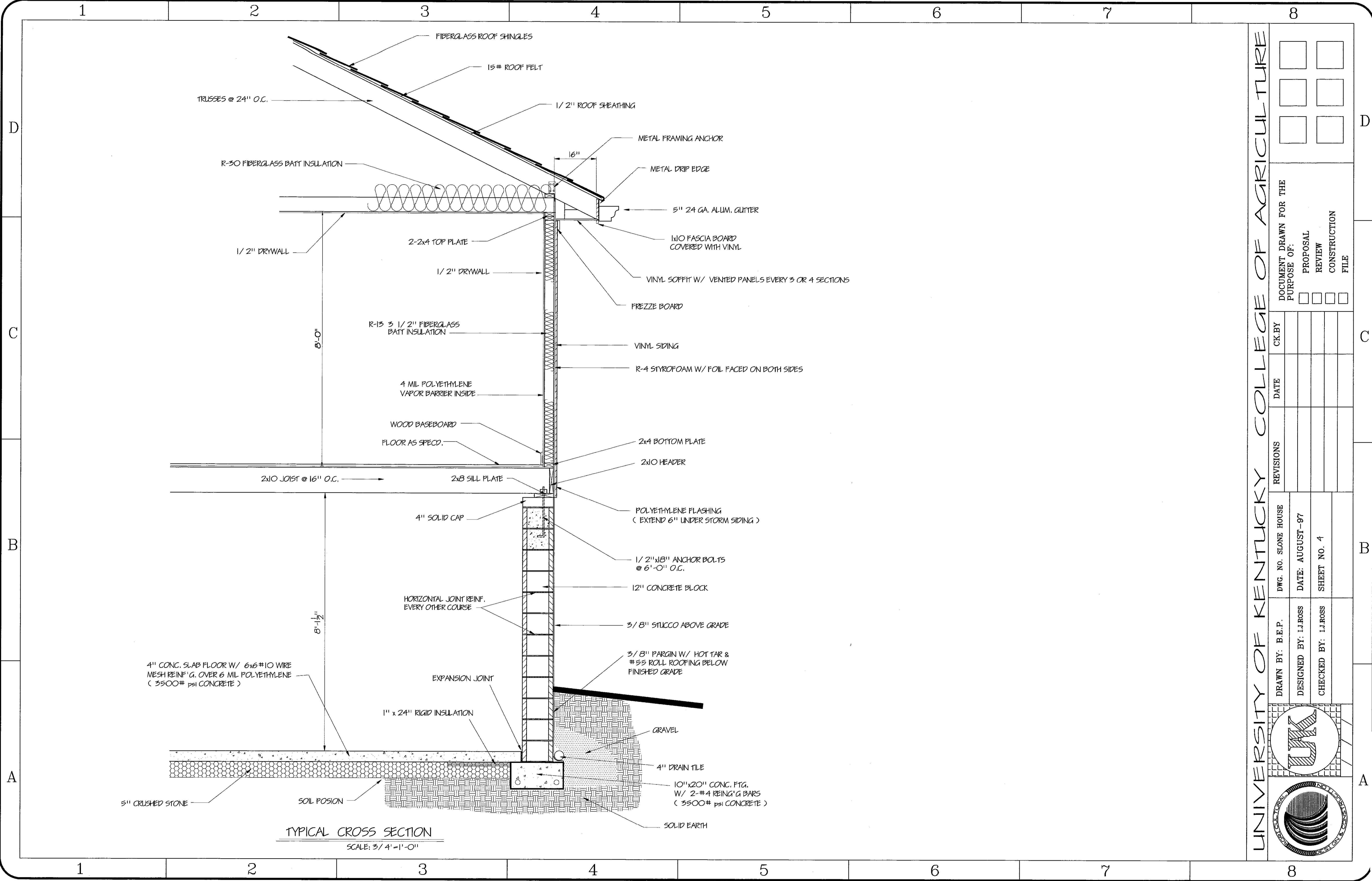
**FOUNDATION PLAN**  
SCALE: 1/4" = 1'-0"

**STAIRWAY DETAIL**  
SCALE: 1/2" = 1'-0"

UNIVERSITY OF KENTUCKY COLLEGE OF AGRICULTURE

DRAWN BY: B.E.P.	DESIGNED BY: I.J. ROSS	CHECKED BY: I.J. ROSS	DWG. NO. SLOANE HOUSE	REVISIONS	DATE	CK. BY	DOCUMENT DRAWN FOR THE PURPOSE OF: PROPOSAL REVIEW CONSTRUCTION FILE
				DATE: AUGUST-97			
SHEET NO. 3							





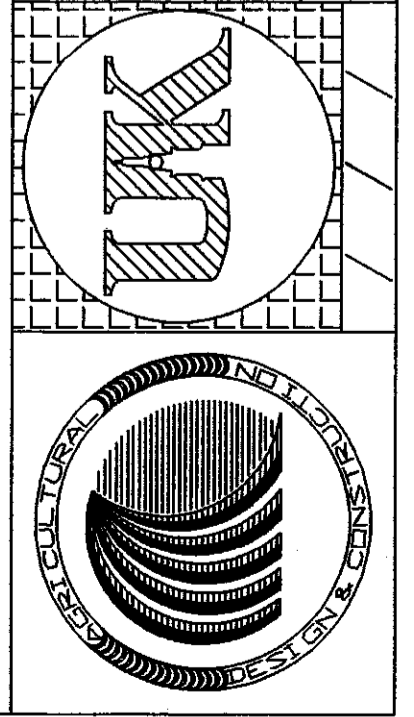
UNIVERSITY OF KENTUCKY COLLEGE OF AGRICULTURE

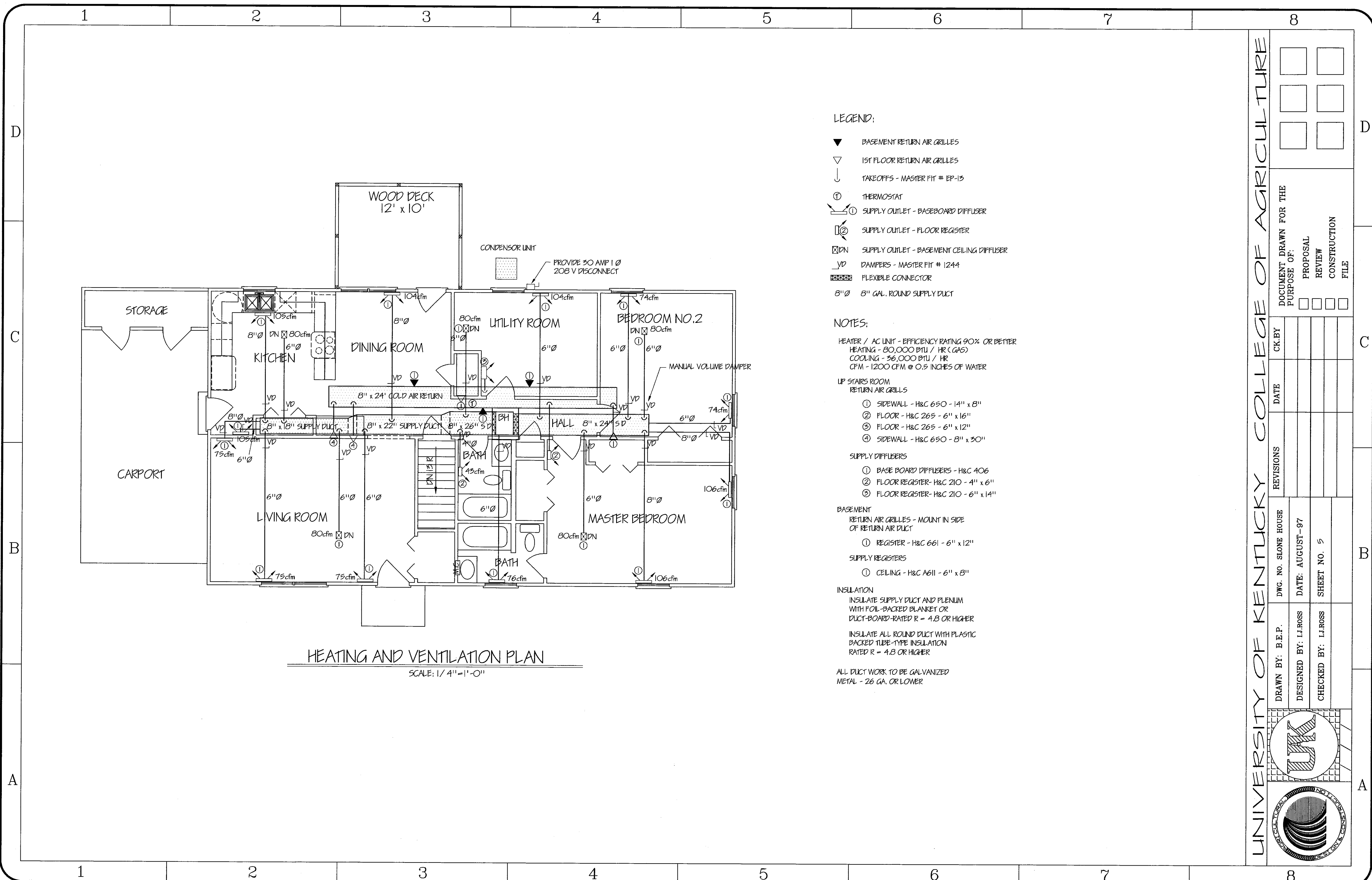
CK.BY	DATE	REVISIONS	DWG. NO. SLOPE HOUSE	DRAWN BY: B.E.P.	DESIGNED BY: I.J. ROSS	CHECKED BY: I.J. ROSS
			DATE: AUGUST-97			
			SHEET NO. 4			

DOCUMENT DRAWN FOR THE PURPOSE OF:

<input type="checkbox"/>	<input type="checkbox"/>
<input type="checkbox"/>	<input type="checkbox"/>
<input type="checkbox"/>	<input type="checkbox"/>
<input type="checkbox"/>	<input type="checkbox"/>

PROPOSAL  
REVIEW  
CONSTRUCTION  
FILE





**HEATING AND VENTILATION PLAN**

SCALE: 1/4" = 1'-0"

**LEGEND:**

- ▼ BASEMENT RETURN AIR GRILLES
- ▽ 1ST FLOOR RETURN AIR GRILLES
- ↓ TAKEOFFS - MASTER FIT # EP-13
- ⊙ THERMOSTAT
- ① SUPPLY OUTLET - BASEBOARD DIFFUSER
- ② SUPPLY OUTLET - FLOOR REGISTER
- ⊠ DN SUPPLY OUTLET - BASEMENT CEILING DIFFUSER
- VD DAMPERS - MASTER FIT # 1244
- ▨ FLEXIBLE CONNECTOR
- 8"Ø 8" GAL. ROUND SUPPLY DUCT

**NOTES:**

- HEATER / AC UNIT - EFFICIENCY RATING 90% OR BETTER  
 HEATING - 80,000 BTU / HR (GAS)  
 COOLING - 36,000 BTU / HR  
 CFM - 1200 CFM @ 0.5 INCHES OF WATER
- UP STAIRS ROOM  
 RETURN AIR GRILLES
- ① SIDEWALL - H&C 650 - 14" x 8"
  - ② FLOOR - H&C 265 - 6" x 16"
  - ③ FLOOR - H&C 265 - 6" x 12"
  - ④ SIDEWALL - H&C 650 - 8" x 30"
- SUPPLY DIFFUSERS
- ① BASE BOARD DIFFUSERS - H&C 406
  - ② FLOOR REGISTER - H&C 210 - 4" x 6"
  - ③ FLOOR REGISTER - H&C 210 - 6" x 14"
- BASEMENT  
 RETURN AIR GRILLES - MOUNT IN SIDE OF RETURN AIR DUCT
- ① REGISTER - H&C 661 - 6" x 12"
- SUPPLY REGISTERS
- ① CEILING - H&C A611 - 6" x 8"
- INSULATION  
 INSULATE SUPPLY DUCT AND PLENUM WITH FOIL-BACKED BLANKET OR DUCT-BOARD-RATED R = 4.8 OR HIGHER
- INSULATE ALL ROUND DUCT WITH PLASTIC BACKED TUBE-TYPE INSULATION RATED R = 4.8 OR HIGHER
- ALL DUCT WORK TO BE GALVANIZED METAL - 26 GA. OR LOWER

UNIVERSITY OF KENTUCKY COLLEGE OF AGRICULTURE


DOCUMENT DRAWN FOR THE PURPOSE OF:	PROPOSAL	
	REVIEW	
	CONSTRUCTION	
FILE		

REVISIONS	DATE	CK. BY

DWG. NO. STONE HOUSE	DATE: AUGUST-97
DRAWN BY: B.E.P.	CHECKED BY: I.J.ROSS
DESIGNED BY: I.J.ROSS	SHEET NO. 5